

**NEW
VERSION**

Take advantage of the
new BasePac structure
and the extended functionality!

BasePac 10

New simple packages

New extended functionality

New central pattern information

**New Windows compliant
data management**

New max. needle number

**Super update deals
incl. upgrade option**



Embroidery Software Partners
Software Programs for Beginners, Advanced and Experts

INNOVATIONS

BASEPAC 10

NEW SIMPLIFIED STRUCTURE

The existing BasePac options have been packed into useful software packages for the different user requirements.

BasePac 10 is available in four configurations:

BASE

The basic configuration of BasePac includes a function for monogram with over 100 fonts, an editor for basic functions such as forming blocks, grouping and scaling with automatic density adjustment and network support for automated loading of stitch data via barcode. Another highlight: With the included „Ringbuffer“ application, the user can directly load patterns from BasePac into various embroidery machines registered in the network.

PREMIUM

Includes the package „BASE“ plus full editor to edit foreign patterns like DST files. In addition, stitch patterns can be automatically created from imported pixel and vector graphics. (BasePac, BASE, Punch 1, ACE)

PROFESSIONAL

Includes the package „PREMIUM“ plus additional functions for high-quality special effects such as curved fillings or color gradients. In addition, an advanced automatic export function is integrated with a variety of industrial formats. (BasePac, PREMIUM, Punch 2, Extended Data Output)

TECHNOLOGY

Includes the package „PROFESSIONAL“ plus import / export and editing function for large embroidery designs (Lässer, Saurer). Additional functions for the laying of fiber and wire. (BasePac, PROFESSIONAL, Schiffli E, Schiffli C K, Laser, Technical Embroidery Systems)

NEW WINDOWS COMPLIANT DATA MANAGEMENT

The formerly leading BasePac data management has been reprogrammed in BasePac 10, to bring it up to date. Data storage in BasePac 10 is now Windows compliant. The program integrates with additional functions in the Windows Explorer. This allows additional information such as pictograms or comments to be displayed directly in Windows Explorer. The functionality of the Windows interface can be used in BasePac 10.

The patterns can now be organized without restrictions and according to the user's idea. All patterns can be opened and saved easily and quickly. The conversion into various embroidery data formats is now completely transparent.

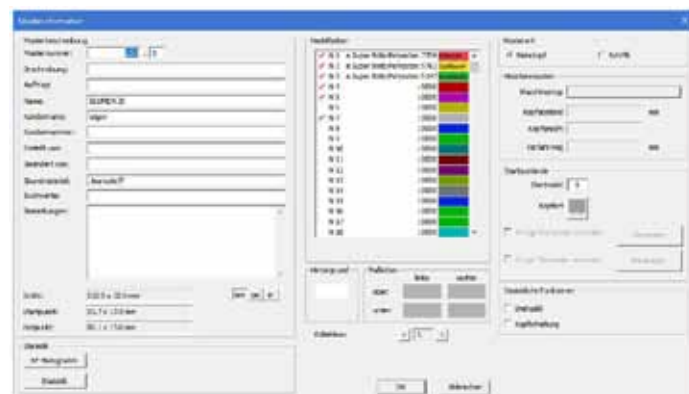
BasePac 10 provides an automatic conversion utility that allows transforming the existing non-Windows compliant database into the new data management structure.

MAXIMUM NUMBER OF NEEDLES

Patterns in BasePac 10 can now contain up to 999 different needles and colors. This is especially important for high-quality, large-format patterns that need to mimic realistic color gradients, as in photos or paintings with many different yarns. These patterns can now also be displayed in a realistic manner in BasePac.

NEW CENTRAL PATTERN INFORMATION

The new central pattern information displays all relevant information about a pattern. Particularly valuable is the possibility to change the settings for the colors and machine types at this point. Special parameters for ZSK's special machines can also be set here.



GENERAL IMPROVEMENTS

MONOGRAMM

The transitions to secondary contours such as i dots or umlaut dots can now optionally never be cut to optimize the embroidery process.

PUNCH: IMPROVEMENTS IN ALL PLACES

Additional contours such as holes, islands and side contours can now be duplicated and also be rotated and mirrored in 90° increments. For segmented input, an additional calculation method has been introduced, which now also allows midline underlays as well as free start and end points.

STITCH CALCULATION: FURTHER OPTIMIZATION

In case of „Structured Filling“, the end stitches can now be laid inwards to prevent them from being pressed out. This is an improvement in the typeface especially with TrueType fonts. The overlap between partial contours has been optimized.

EDITOR - NEEDLE / STOP ASSIGNMENT

In the assignment list, a repetition can now simply be made in order to set the needle assignment more quickly. In the „Stretch and Rotate“ dialog, resizing can also be proportionally scaled automatically.

FEATURES

FROM PIXEL IMAGE TO A FINISHED EMBROIDERY MOTIF

BasePac automatically converts scanned pixel graphics and vector graphics into stitch data. Colored areas are intelligently filled with flat or step stitches. Of course, the stitch data can be edited and changed.

Automatic filling of drawing lines

BasePac creates stitch data from imported, self-drawn or automatically generated drawing lines. They determine the contours used, the type of filling and the color. Stitch position, ideal transitions and stitch calculation are handled by BasePac. This is how embroidery designs are quickly created, exactly to your wishes.

► Included from BasePac „PREMIUM“

NAME TAGS - EASY AND FAST

The BasePac Stencil function allows the quick and easy production of series of various name tags or badges.

Supported by a program wizard, the template function allows to create a frame and a pattern (company logo, etc.) in which the individual names are automatically well fitted.

The names to be embroidered can be imported by a simple text file or entered directly.

► Included from BasePac „BASE“

SPECIAL EFFECTS

There is a variety of satin stitch, quilting and quilting programs available. Complex surfaces get a natural swing with wavy step. Loose density and the overlaying of colors lead to interesting fillings with few stitches.

Simple input - creative work

Macros can be easily placed on surfaces or lines. The same macros with different parameters create new effects. Step effects (stencils) on twisted quilting surfaces always create new effects. The stencil library can be extended by custom fill patterns.

Satin stitch program - with branches

You can define cuts in the surface that separate branches. The input of these cuts is possible manually with the contour cut button or by an automatic calculation of the cuts and stitch layers.

► Included from BasePac „PROFESSIONAL“

FRAMES

A rich variety of frames is available for different embroidery tasks e.g. patches, name tags and for emblems.

The frames can be created with satin stitch, stitch line or with macros as well as with a quilting surface. The sizes and shapes can be easily edited.

Create your own frames and save them in your own frame directory.

► Included from BasePac „BASE“

EDITING

With the editor, stitch data patterns can be analyzed and edited in various ways.

Patterns can be quickly checked for size, used needles and machine functions. Numerous display functions facilitate the analysis and processing of the data. Finished stitch data or sample parts can be combined to new designs.

► Included from BasePac „PREMIUM“

PARTICULAR

The punch parameters include some functions that can be used to make certain presets for punching.

In this case, the machine functions are set to a specific initial value. In the case of micropick patterns, this is definitely the starting needle, depending on the machine type, the head selection and the possibility of changing the speed. For large embroidery patterns, all machine functions listed in the window can be activated or suspended.

Minimal stitch length

Here you can set the minimum stitch length that applies to the whole system, i.e. all patterns. Stitches which are shorter than the minimum stitch length are combined with the following or previous stitch.

Using KSA functionality

If this control is activated when punching manual stitches the machine functions for moss, kettle and winding are displayed as buttons in the parameter bar and displayed accordingly in the pattern.

Sequin size

Here you can set size and shape of the sequin, which is displayed when you press the sequin button during punching. A window opens, where to enter the size of the sequins and the size of the hole for 4 sequin types.

► Included from BasePac „PROFESSIONAL“

BasePac 10

SUPER UPDATE DEALS INCL. UPGRADE OPTION

BASEPAC STARTING WITH VERSION 10 IN ONLY 4 VARIANTS

Starting with BasePac 10 we reduced BasePac to only 4 variants, in which the previous options have been summarized:

Base, Premium, Professional and Technology.

Braille is the only remaining and additional option still available for an additional fee.

A VERY SPECIAL AND UNIQUE OFFER

No matter which old BasePac version you own, you can choose one of the three software packages Base, Premium and Professional, which you can update in BasePac 10 and - depending on the desired variant - want to upgrade.

In addition to the update to the current BasePac 10, you will receive an additional and really inexpensive upgrade to much higher programming than what you may have had before!

UPDATE/UPGRADE OFFER

IE. FROM BASEPAC 8 TO BASEPAC 10

Update your BasePac 8 to BasePac 10 and get an instant access to the advanced functionality and value added to the new BasePac variants BASE, PREMIUM and PROFESSIONAL!

UPDATE TO	OUR OFFER
BASE	340 €
PREMIUM	680 €
PROFESSIONAL	1.300 €

We recommend a paid training provided by your local ZSK STICKMASCHINEN representative to get the most out of the upgrade to BasePac 10.

BASEPAC AT YOUTUBE

Videos theming BasePac are available in the YouTube video channel of ZSK STICKMASCHINEN. In addition to tutorials on how to use BasePac, you will also find a video on the latest developments of BasePac 10 in English.



The adjacent QR code contains a link to a YouTube playlist of available BasePac videos on the ZSK STICKMASCHINEN YouTube channel.

The ZSK STICKMASCHINEN YouTube channel is also easily accessible on your PC: www.youtube.com/zskfilm

Note: QR codes can only be recorded with an additional app on your android smartphone or with the latest iOS on your iPhone. The codes can contain a variety of information, such as contact addresses, links to the Internet, references to downloads, etc.

QUESTIONS ABOUT PURCHASE, UPDATE AND FURTHER INFORMATION?

For any question about the new BasePac 10 and the possibilities to buy a new license or to purchase an update, we are here to help.

Please send an email with your request to:

zsk@zsk.de

Subject: BasePac 10 Information

or contact your local ZSK STICKMASCHINEN representative.