



ZZ 565

## Global<sup>®</sup> ZZ 560 Series - High speed zig-zag machines

### TECHNICAL SPECIFICATIONS

Machine speed\*  
**up to 5000 spm**  
Stitch type  
**304**  
Number of needles  
**1**  
Feed type  
**drop feed**  
Zig-zag width  
**0-10 mm max.**  
Stitch length  
**max. 5 mm**  
Hook type  
**564 / 565 standard hook**  
**566 / 568 large hook**  
Needle type  
**134R**  
Presser foot lift  
**6 mm**  
Optional extra's:  
• **presser foot lift**  
• **back tack**  
(all pneumatic or electric)

**ZZ 560** - High speed zig-zag machines, semi automatic lubrication, built-in bobbinwinder. Sliding excenter reverse feed, pendant link feed mechanism.  
**ZZ 560 TD** - same as above, but with automatic thread trimmer.

### MAQUINAS DE ZIG ZAG

**ZZ 560** - Máquinas de zig zag de alta velocidad, lubricación semi automática, devanador de canilla acoplado. Deslizamiento excéntrico del inversor de puntada y mecanismo de transmisión del arrastre suspendido.  
**ZZ 560 TD** - La misma que ZZ 560, pero con corta-hilos automático.

### ZICK-ZACK SCHNELLNÄHER

**ZZ 560** - Hochleistungs Zick-Zack Schnellnäher mit halbautomatischer Schmierung und eingebautem Spulapparat. Umschaltung auf Rückwärtsstich durch Gelenk und Gleitexcenter.  
**ZZ 560 TD** - Baugleich mit ZZ 560, jedoch mit automatischem Fadenabschneider.

### MACHINE ZIG-ZAG

**ZZ 560** - Machine zig-zag à grande vitesse, lubrification semi automatique, bobinoir incorporé. Marche arrière par excentrique, mécanisme de griffe par bielles suspendues.  
**ZZ 560 TD** - Comme ZZ 560, mais avec coupe-fil automatique.

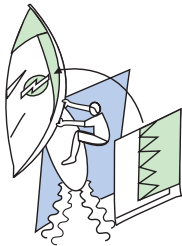
## Global ZZ 560 series

The ZZ 560 series are semi-lubricated, fast running, zig-zag machines.

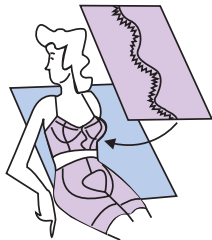
ZZ 560 series are usable on a wide variety of materials. These machines are also available with an electric underbed thread trimming device (type TD).



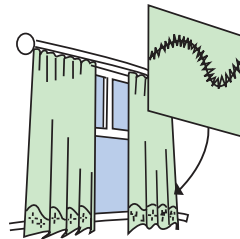
Electric thread trimmer (TD) and large hook



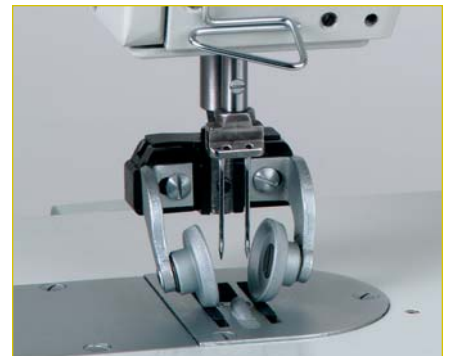
Global ZZ 566



Global ZZ 564 | ZZ 565



Global ZZ 564 | ZZ 565



Cordingset on ZZ 568 C7. 7 mm needle width (other gauges available as an option).

## Specifications

model		number of needles	max. stitch length mm	max. stitch width mm	presser foot lift mm	space to right of needle mm	needle system	max. sewing speed spm*	thread trimming device	hook
ZZ 564	High speed 4 mm flatbed zig zag sewing machine for attaching lace. With knife to trim lower fabric	1	3	4	3	270	134R	4400	–	standard
ZZ 564 TD	Same as ZZ 564 - with underbed thread trimmer	1	3	4	3	270	134R	4400	•	standard
ZZ 565	High speed 6 mm flatbed zig-zag sewing machine	1	5	6	6	270	134R	5500	–	standard
ZZ 565 TD	Same as ZZ 565 - with underbed thread trimmer	1	5	6	6	270	134R	5000	•	standard
ZZ 566	High speed 10 mm flatbed zig-zag sewing machine	1	5	10	6	270	134R	4400	–	large
ZZ 566 TD	Same as ZZ 566 - with underbed thread trimmer	1	5	10	6	270	134R	4400	•	large
ZZ 568	High speed 10 mm flatbed zig-zag sewing machine for medium heavy fabric	1	5	10	6	270	134R	3400	–	large
ZZ 568 TD	Same as ZZ 568 - with underbed thread trimmer	1	5	10	6	270	134R	3400	•	large
ZZ 568 C7	For cording work	2	5	–	6	270	134R	2600	–	large
ZZ 568 H	For heavy work	1	5	10	10	270	134R	3400	–	large
ZZ 568 H-TD	For heavy work with underbed thread trimmer	1	5	10	10	270	134R	3400	•	large

\* Max. sewing speed (in spm.) depends on type of operation and/or materials to be sewn.

The GLOBAL® Selection is brought to you by:

GLOBAL® is a trademark of the Global International Corporation, the people that carefully organize the supply of spareparts before they launch each product.

When ordering parts please specify:  
 1 machine model  
 2 part numbers